



Client Release Notes

for

Release - 8.30

Released on 15th May 2010

Trapeze Client Release Notes - Release - 8.30

Table of Contents

1	PURPOSE.....	3
2	ENHANCEMENTS AND FIXES.....	3
2.1	PDF Improvements.....	3
2.1.1	PDF Handling Improvements.....	3
2.2	Toolbar.....	3
2.2.1	Customized Date Formats.....	3
2.2.2	Special date - for multi page annotations.....	5
3	ISSUES.....	7
3.1	Delete pages from non-flat page tree PDF's.....	7
3.2	Line Measurement Tool Scale changes causes crash.....	7
3.3	Uncompressed PDF's caused bad data file.....	7

1 Purpose

1. Documenting the resolution of listed Requests
2. Identifying the enhancements that have been included with the current release.

2 Enhancements and Fixes

New functionality has been included to Trapeze Desktop and existing functionality has been improved or fixed as described in the following section.

2.1 PDF Improvements

2.1.1 PDF Handling Improvements

Trapeze has been changed to include:

- PDF that have zoom area bookmarks

2.2 Toolbar

Remove All button have been added to the *Customize Toolbar* dialog.

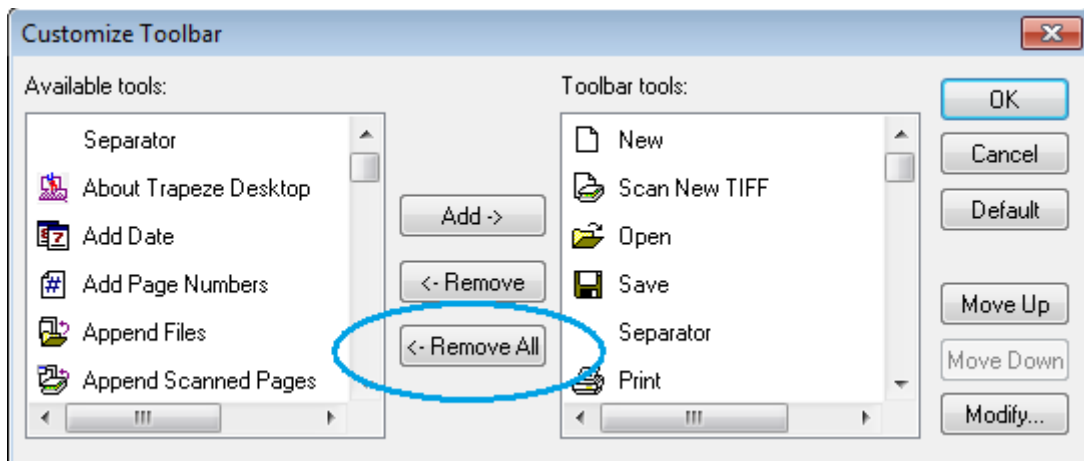


Figure 1: Remove All button

2.2.1 Customized Date Formats

Trapeze now provides the ability to use the following date in text and picture stamps and bookmarks:

1. Short date (d/MM/yy)
2. Long date (dddd, d MMMM yyyy)

Short date: 10/05/2010

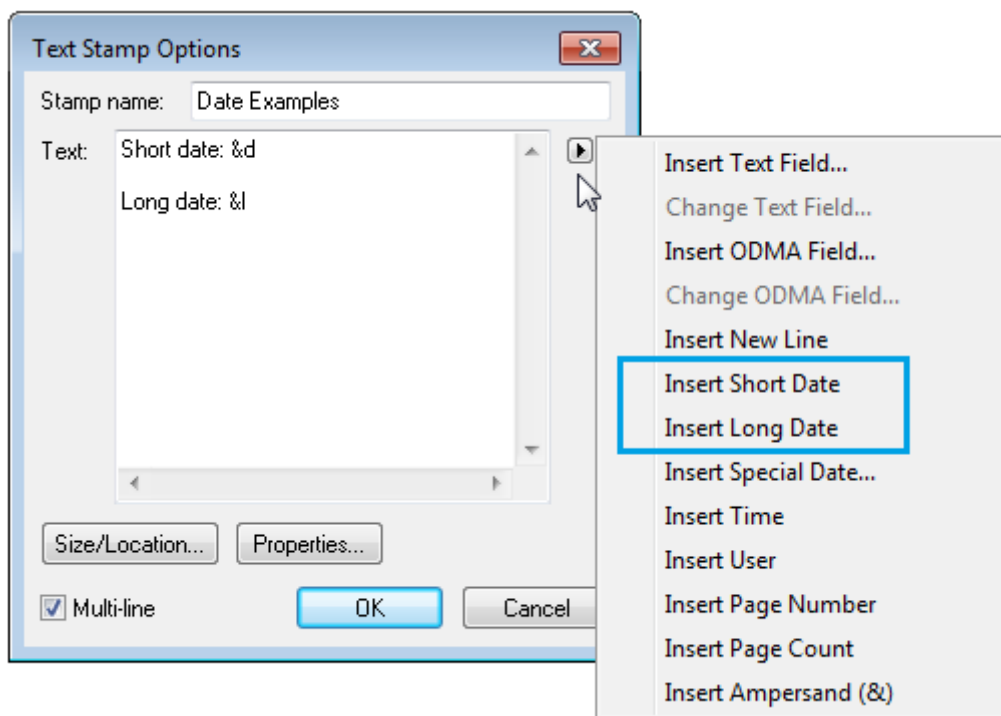
Figure 2: Short date: (d/MM/yy)

Long Date: Monday, 10 May 2010

Figure 3: Long date: (dddd, d MMMM yyyy)

To configure the date in a Stamp:

1. Either edit an existing stamp or create a new stamp
2. Expose the insert menu
3. Select the date format:
 Insert Short Date
 Insert Long Date

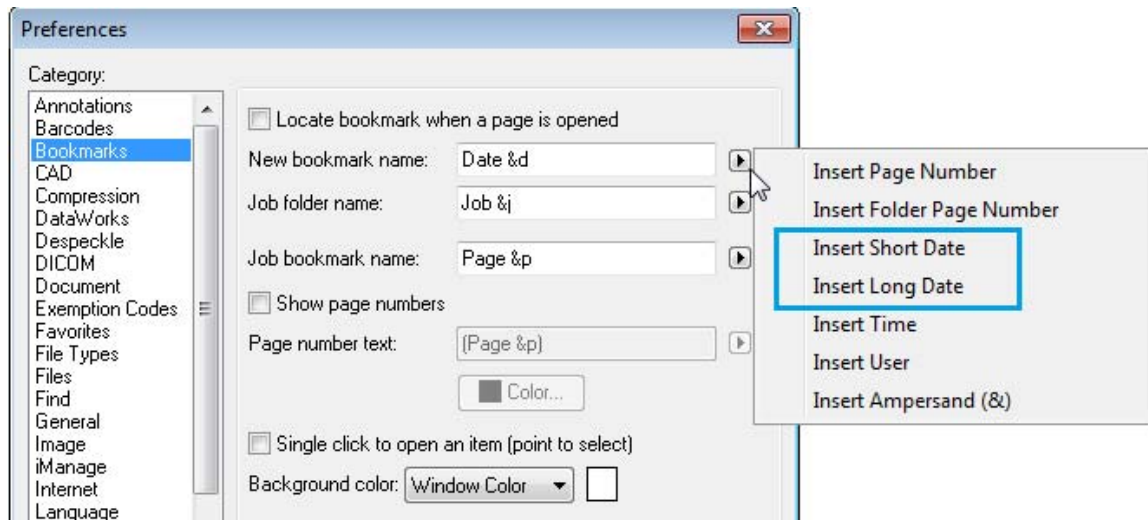


4. Close the *Text Stamps Options* dialog and test the stamp

Description	Codes	Further details
Automatic Population of Information		
Insert Short Date	&d	Inserts the current date, from the computer, into the stamp when it is applied using the following format: d/MM/yy
Insert Long Date	&l	Inserts the current date, from the computer, into the stamp when it is applied using the following format: (dddd, d MMMM yyyy)

To configure the date in a Bookmark:

1. Open the Edit menu | Preferences select the **Bookmarks** Category
2. Next to the 'New bookmark name:' field expose the insert menu
3. Select the required date format



The bookmarks will be created during scanning when using separator sheets.

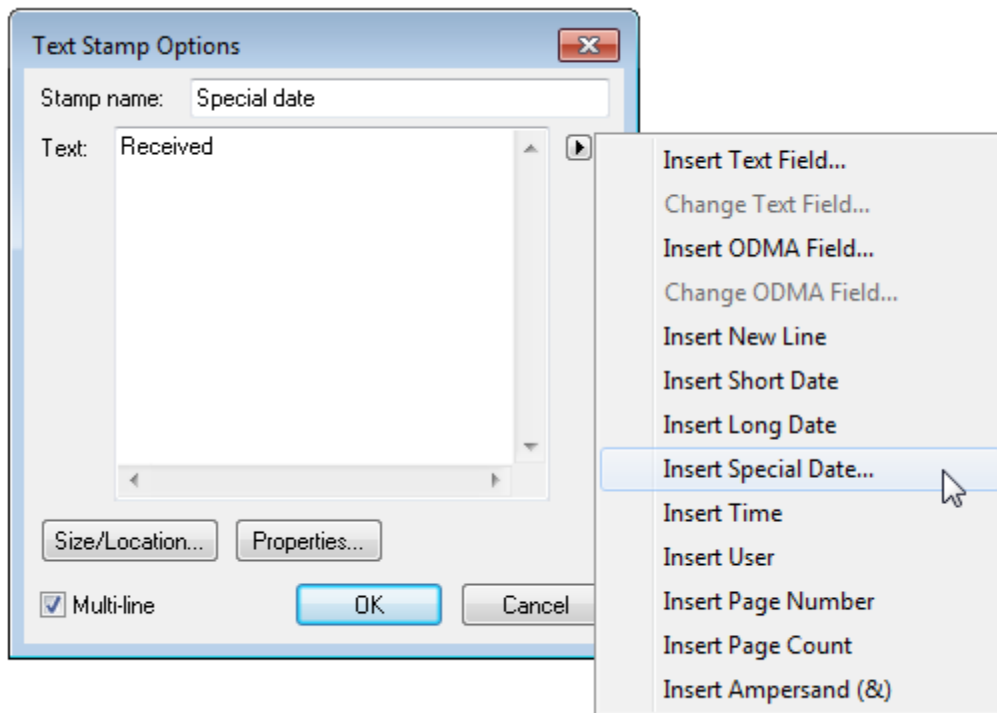
2.2.2 Special date - for multi page annotations

The ability to automatically apply the current date to new pages inserted into the active file has been added to Trapeze. The Special Date feature should be used in multi-page annotation (stamp all pages) and operates within TIF files as long as the annotations are not burnt in. The date inserted can be formatted to either short or long date.

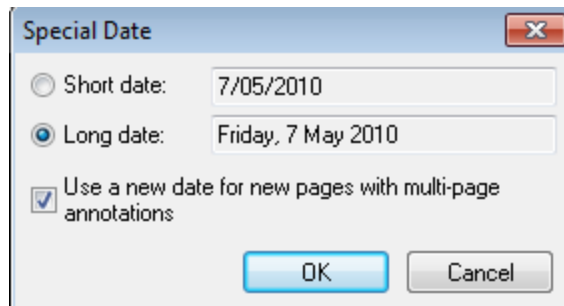
The special date stamp replaces the need to have a new page manually stamped with the date that it was received. It is useful for identifying new pages added to an existing file such as a building application that has amendments. New pages will receive the current date automatically when they are inserted whilst the existing pages will retain their original date.

To configure a Stamp to use the Special date:

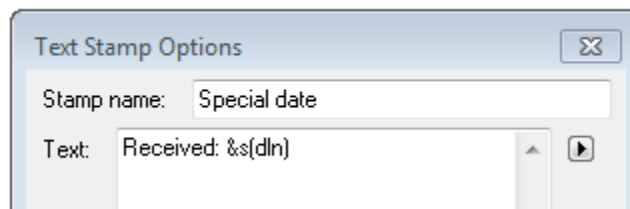
1. Either edit an existing stamp or create a new stamp
2. Expose the insert menu
3. Select the **Insert Special Date**



4. In the *Special Date* dialog, select the required date format (short or long) option



5. Tick the **Use a new date for new pages with multi-page annotations** checkbox
6. Click on **OK** to close the *Special Date* dialog



7. Click **OK** to close the *Text Stamp Options* dialog

Description	Codes	Further details
Automatic Population of Information		
Insert Special Date		Inserts the current date (short or long date format) to new pages inserted into the active file. The Special Date feature should

Description	Codes	Further details
(Long Date)	&s(dln)	be used in multi-page annotation (stamp all pages) and operates within TIF files as long as the annotations are not burnt in.
(Short Date)	&s(dn)	

3 Issues

3.1 Delete pages from non-flat page tree PDF's

When pages were deleted from certain PDF's that contained layered page (bookmark) trees, it caused a bad file data message. This has now been fixed so that Trapeze can support non-flat page tree PDF's.

3.2 Line Measurement Tool Scale changes causes crash

Line Measurement Tool crashed if the scale was changed from the default setting. This has now been fixed.

3.3 Uncompressed PDF's caused bad data file

Selecting the "Leave Uncompressed" option on during saving caused a bad data file error to display the next time the file was opened in Trapeze. This issue has now been fixed.